

### Construction Update: Relocated Bike Parking Facility

We would like to notify you of the installation of a temporary bike parking facility between Mitchell Way & Cornwallis St. (see attached map)

This facility will accommodate 3 bike racks and will be installed prior to the removal of the existing bike racks in Innovation Plaza and at the ATP entry stairs on Cornwallis St. The new temporary facility will remain in place until the completion of Public Domain works. At the completion of these works the grass at the temporary facility location will be reinstated.

We apologise for any disruption caused during these works. If you have any questions or if you require more information, please contact [atp.communicationsf@mirvac.com](mailto:atp.communicationsf@mirvac.com) or call 1800 870 549.

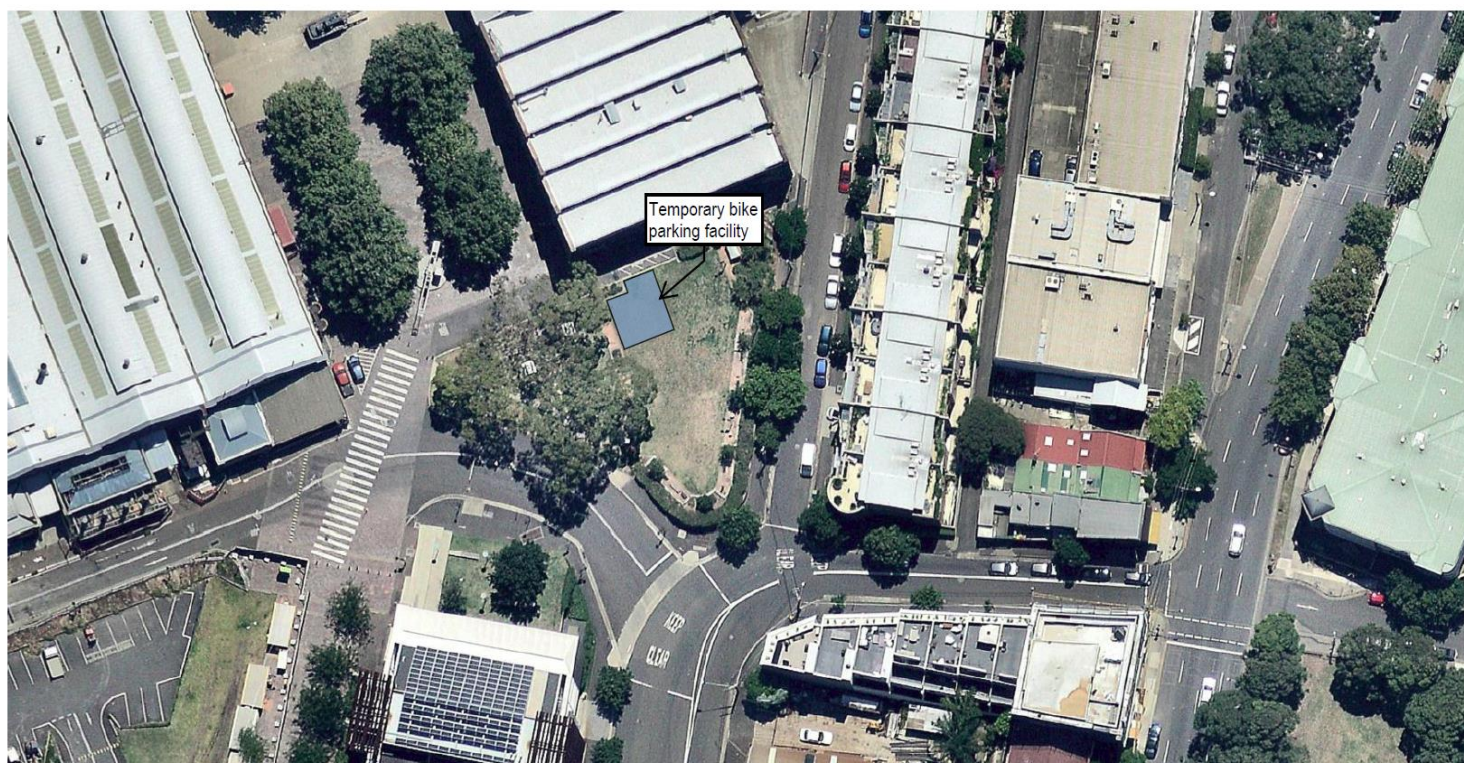
Kind regards,

**Kim Elliott**  
ATP Communications Specialist  
Office and Industrial

T +61 2 9080 8125  
2 Locomotive St, Eveleigh NSW 2015



*Reimagine urban life*



- Temporary bike parking facility will be installed between Mitchell Way & Cornwallis St
- 3 bike racks will be installed
- Facility will be in place during works to Public Domain